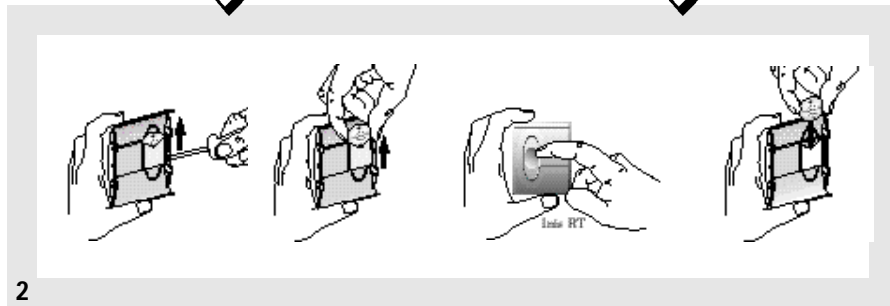
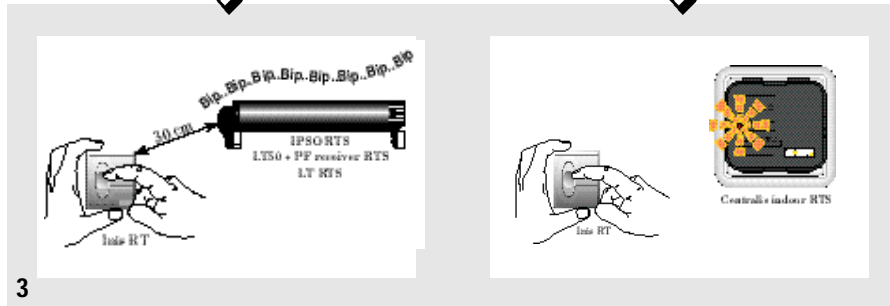




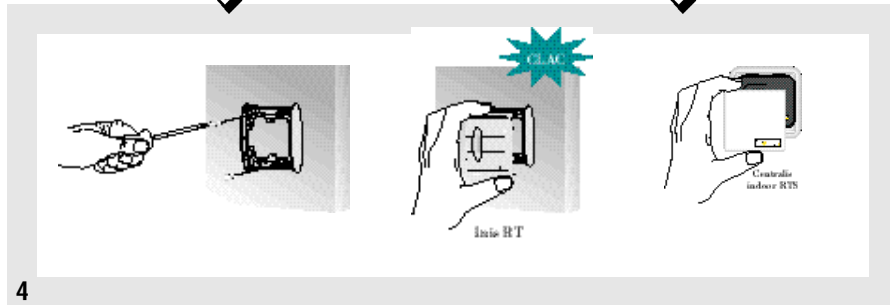
1



2



3



4

FRANÇAIS **F**

Caractéristiques techniques

Inverseur sans fil / Classe III
 Indice de protection : IP 30
 Température de fonctionnement : + 5 °C à + 40 °C
 Environnement normalement pollué
 Alimentation : pile au lithium 3V type CR 2032 ou CR 2430.
 durée de vie = 3 ans (2 cycles/jour)
 Fréquence d'émission : 433,42 Mhz
 Dimensions : 80 x 80 x 17 mm

Assistance technique FRANCE :

ENGLISH **GB**

Technical characteristics

Wireless control / Class III
 Protection index : IP 30
 Operating temperature : + 5 °C to + 40 °C
 Normally polluted environment
 Power: 3V lithium 3V battery, CR 2032 or CR 2430 type
 life duration = 3 years (2 cycles/ day)
 Emission frequency : 433.42 Mhz
 Dimensions : 80 x 80 x 17 mm

DEUTSCH **D**

Technische Daten

Drahtloser Schalter / Schutzklasse III
 Schutzgrad : IP 30
 Betriebstemperatur : +5° C bis + 40° C
 Normal verschmutzte Umgebung
 Versorgung : Lithiumbatterie 3 V Typ CR 2032 oder CR 2430.
 Lebensdauer = 3 Jahre
 (2 Zyklen/Tag)
 Sendefrequenz : 433,42 Mhz
 Abmessungen : 80 x 80 x 17 mm

NEDERLANDS **NL**

Technische gegevens

Draadloze schakelaar / Klasse III
 Beschermingsklasse behuizing: IP 30
 Omgevingstemperatuur: +5°C tot +40°C
 Normaal "vervuilde" omgeving
 Voeding: lithium batterij 3V type CR 2032 of CR 2430.
 Levensduur = 3 jaar
 (indien 2 x per dag gebruikt)
 Zendfrequentie: 433.42 Mhz
 Afmetingen: 80 x 80 x 17 mm

ESPAÑOL **SP**

Características técnicas

Emisor/ Clase III
 Índice de protección: IP 30
 Temperatura de funcionamiento: de +5 °C a +40°C
 Operatividad en ambientes con normal radiación electromagnética
 Alimentación: Pila de litio 3V tipo CR 2032 ó CR2430
 Duración: 3 años (2 ciclos por día)
 Frecuencia de emisión: 433,42 Mhz
 Dimensiones: 80 x 80 x 17 mm

ITALIANO **I**

Caratteristiche tecniche

Commutatore senza filo / Class III
 Grado di protezione: IP 30
 Temperatura di funzionamento: +5°C a +40°C
 ambiente normalmente inquinato
 Alimentazione: batteria da 3V al litio tipo CR 2032 o CR 2430.
 Durata di vita = 3 anni (2 cicli/ giorno)
 Frequenza di lavoro: 433.42 Mhz
 Dimensioni: 80 x 80 x 17 mm



inteo *Inis RT*

INSTALLATION GUIDE (GB)

GUIDE D'INSTALLATION (F)

INSTALLATION LEITUNGEN (D)

INSTALLATIE GIDS (NL)

GUIA DE INSTALACION (SP)

GUIDA DI INSTALLAZIONE (I)



Non-binding document. Products and references in this document are subject to change without prior notice. Please consult SOMFY before using such references. © SOMFY 04/1699 Notice Ref.18224A

